



**14 Marett Road, Havre des Pas, St. Helier, Jersey, JE2 4PQ**  
**£520,000**



A short walk from the centre of St Helier, Havre des Pas is a charming coastal seafront known for its relaxed seaside atmosphere, offering a perfect blend of beauty and historic charm that benefits from all the entertainment and amenities on offer.

Nestled on a quiet road, this delightful two bedroom cottage has both character and convenience. Arranged over two floors, the ground level features a kitchen with dining room, sitting room, and family bathroom, while the first floor boasts two generously sized double bedrooms.

Externally, the property benefits from a private driveway at the rear with parking for one to two vehicles via D'Auvergne Lane. The low-maintenance front courtyard garden provides a lovely outdoor space, complete with a storage shed for added practicality. This home presents an excellent opportunity to create a dream coastal retreat, just a stones throw from the beach.



Slomans Estate Agents.  
17 La Colomberie, St Helier,  
Jersey JE2 4QB  
T: 01534 879787  
E: sales@slomans.co.uk



### **SERVICES**

Gas Fire (currently disconnected)  
Electric wall heaters  
Mains Drains and Water

### **ANTI MONEY LAUNDERING REGULATION**

Once an offer is accepted and negotiations for the purchase of a property are entered into, the prospective purchasers will be asked to produce photographic identification (passport or driving licence) and proof of residency documentation eg, a current utility bill together with confirmation of source of funds. This is in order for us to comply with the current Money Laundering Legislation.

### **DISCLAIMER**

Please note that Slomans Estate Agents have prepared these particulars as a general guide only. We have not carried out a detailed survey, nor tested the services, appliances and specified fittings. These particulars are supplied on the understanding that all negotiations are conducted through Slomans Estate Agents. Their accuracy is not guaranteed, nor do they form part of any contract.

### **FREE VALUATION**

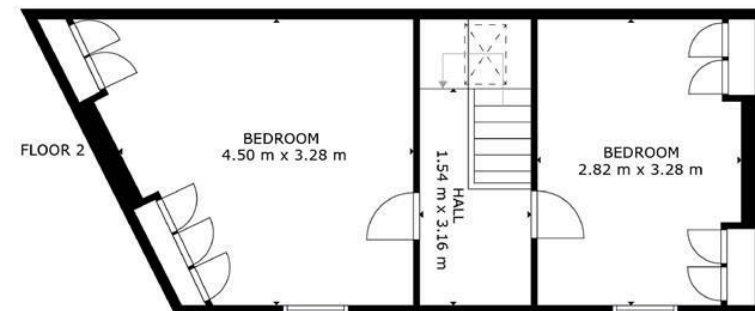
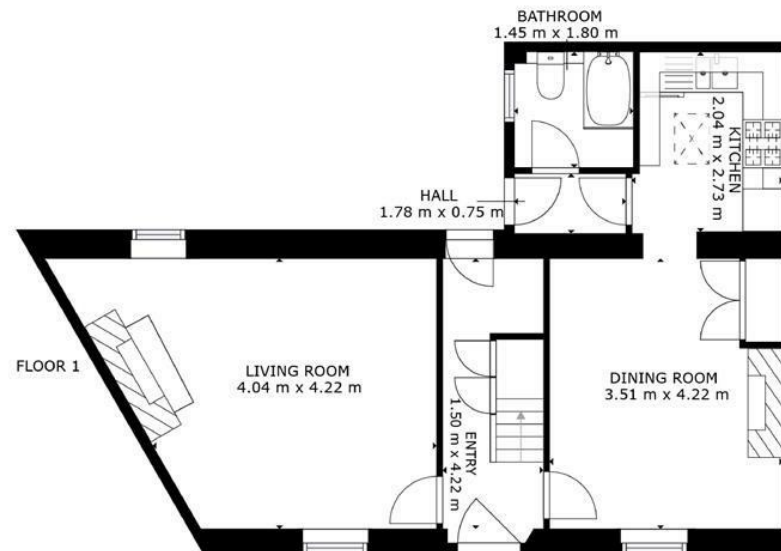
Would you like to know what your own home is worth? If you would like a free verbal valuation please do not hesitate to contact us on Tel: 87 97 87











GROSS INTERNAL AREA  
FLOOR 1: 53 m<sup>2</sup>, FLOOR 2: 35 m<sup>2</sup>  
TOTAL: 88 m<sup>2</sup>

SIZES AND DIMENSIONS ARE APPROXIMATE, ACTUAL MAY VARY.